

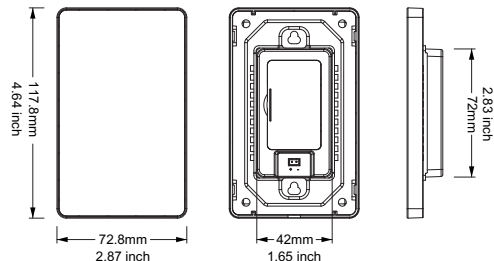
1. Features

We adopt a high precision capacitive touch screen IC. Touch screen is very stable; 2.4GHz high RF wireless control with long distance controlling, low power consumption and high speed transmitting rate. This product widely work on our smart LED Lighting, LED controller etc.

2. Parameters

Working Voltage: 3V(2*AAA Battery)
Standby Power Consumption: 20μA
Transmitting Power: 6dBm

Transmission Frequency: 2.4GHz
Control Distance: 100 ft
Working Temp.: 14°F~104°F



Panel Remote (2.4G)

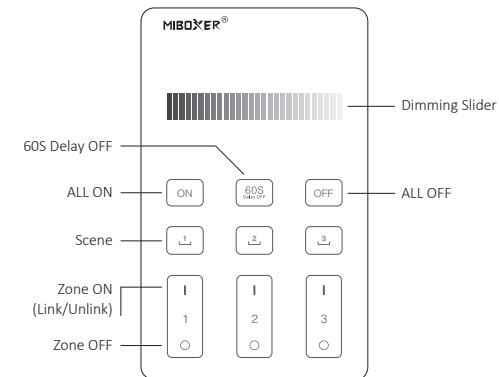
Model No.: U1 / U2 / U3

3. Function of keys

Remark: When touching the button, LED indicating lamp will flash once with different sound (Touch slider with no sound).

Model No.: U1

3-Zone Panel Remote (Brightness)



Touch dimming slider to change the brightness from 1~100%.

ON Touch master ON, turn on all linked lights.
Long press 5 seconds to turn ON the indicating sound.

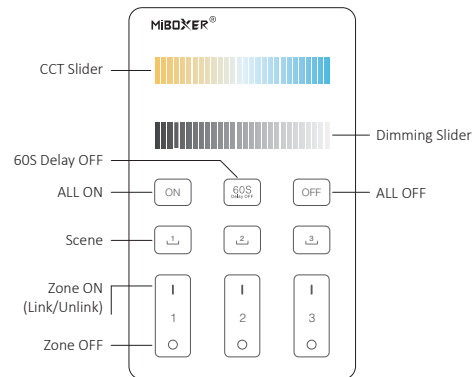
OFF Touch master OFF, turn off all linked lights.
Long press 5 seconds to turn OFF the indicating sound.

Short press: activate scene.

Long press 3 seconds: save current brightness (the light flashes one time slowly once completed successfully).

Model No.: U2

3-Zone Panel Remote (Color Temperature)



Touch the slider to change color temperature.

Touch dimming slider to change the brightness from 1~100%.

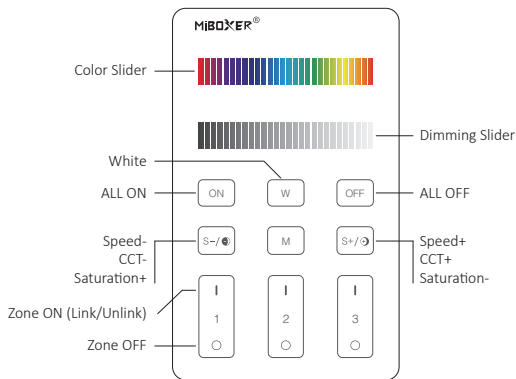
ON Touch master ON, turn on all linked lights.
Long press 5 seconds to turn ON the indicating sound.

OFF Touch master OFF, turn off all linked lights.
Long press 5 seconds to turn OFF the indicating sound.

Short press: activate scene.

Long press 3 seconds: save Current brightness and color temperature (the light flashes one time slowly once completed successfully).

Model No.: U3
3-Zone Panel Remote (RGB+CCT)



Touch color slider, choose the color you want.

Touch dimming slider to change the brightness from 1~100%.

Short press turn on all linked lights.
 Long press 5 seconds to turn ON the indicating sound.

Short press turn off all linked lights.
 Long press 5 seconds to turn OFF the indicating sound.

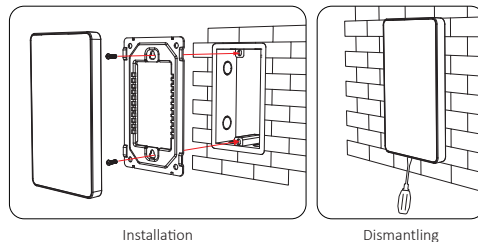
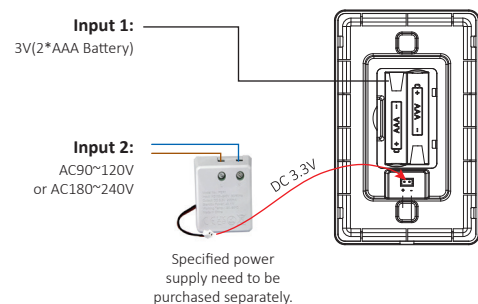
Short press switch to white light mode.

Short press switch to Dynamic Mode.

For dynamic mode, speed- For white mode, CCT- For RGB mode, saturation+

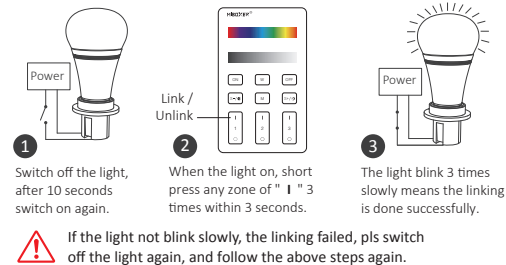
For dynamic mode, speed+ For white mode, CCT+ For RGB mode, saturation-

4. Installation

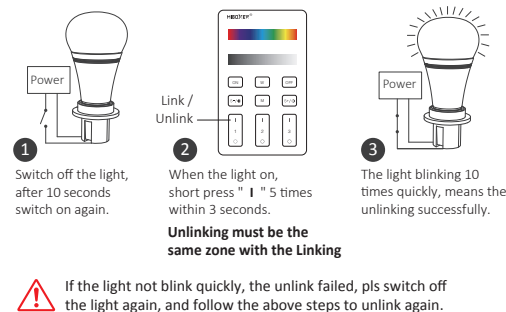


5. Link / Unlink

Linking Instructions



Unlinking Instructions



6. Attention

1. During installation, please handle with care to avoid breaking the glass panel.
2. Don't use in humid or high-temperature areas. If not used frequently, remove the battery and store it in a dry, static-free environment.
3. Avoid using near metal or strong magnetic areas, as this may affect the signal and reduce range.

Made in China

