

Rotating Triac dimmer (Zigbee 3.0 + 2.4GHz)

Model No.: TRI-K1ZR

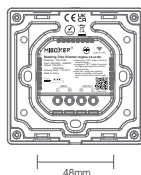
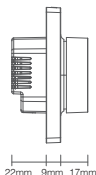
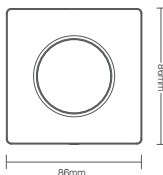
Features

- Uses Zigbee 3.0 + 2.4G wireless transmission technology
- Smartphone APP control (Zigbee 3.0 gateway is needed)
- 2.4G RF wireless remote control
- Trailing edge phase-cut technology
- 0~100% stepless dimming and flicker free
- Lowest brightness setting function
- Built-in temperature detecting switch, over heat /loading protection
- Auto transmitting function, unlimited control distance
- Anti-fire PC shell is more safety
- Support Alexa, Google Assistant, Yandex Alice voice control (Zigbee 3.0 gateway is needed)

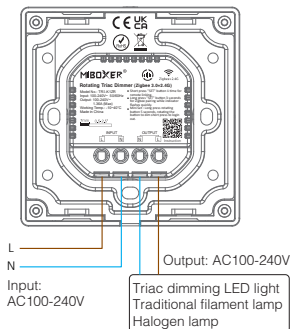


Parameters

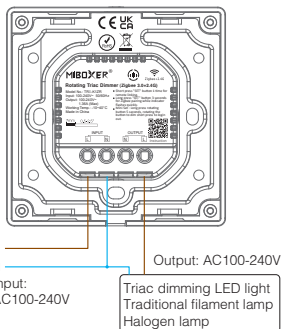
Name:	Rotating Triac dimmer	IP Rating:	IP20
Model No.:	TRI-K1ZR	Working Temperature:	-10~40°C
Input Voltage:	100-240V~ 50/60Hz	EMC Standard (EMC):	ETSI EN 301 489-1 V2.2.3(2019-11) ETSI EN 301 489-3 V2.3.2 (2023-01)
Output:	100-240V~	Safety Standard (LVD):	EN 61347-2-11: 2001+A1: 2019 EN 61347-1: 2015+A1:2021 EN 62493: 2015+A1:2022
Output Current:	Max 1.36A	Radio Equipment (RED):	ETSI EN 300 440 V2.2.1 (2018-07)
Output Power:	150W @110V; 300W @220V	Certification:	CE, EMC, LVD, RED
Protocol:	Zigbee 3.0 + 2.4GHz RF		
Control Distance:	Zigbee: 50M (Open area) 2.4G RF: 30M		



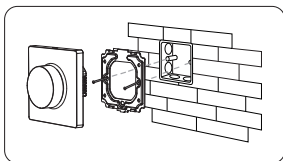
Connection Diagram



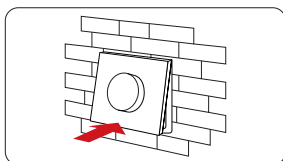
or



Installation Diagram



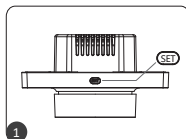
Fix the controller base on the bottom case with screw.



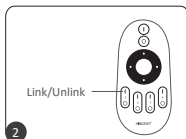
Clicks into the upper side of glass panel on the controller base, then press the lower side slightly to make it clicks into the controller base.

Remote Link

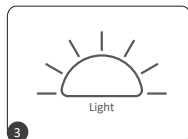
Triac dimmer can be connected with remote control



Short press "SET" button 1 time for remote linking.



short press " | " 3 times within 3 seconds

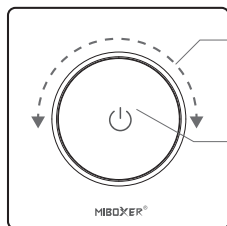


link is done once light flashes 3 times slowly



Link is failed if light doesn't flash, please repeat above steps
(Attention: can not link again if remote already finished linking)

Functional Description



Rotate the knob to adjust brightness

- Short press the knob to turn the light on and off
- Press and hold the knob for 5 seconds until the indicator flashes to set the minimum brightness. Turn the knob to adjust to the appropriate brightness value and short press the knob to exit

“Breaker mode” is activated or shut down

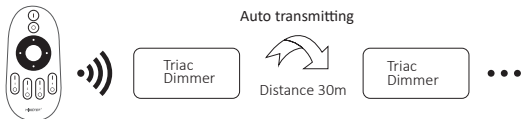
Attention: It only support to turn on/off light, user can not dim device once this mode is activated

Turn On: short press “SET” 5 times quickly, mode had activated once indicator blink 3 times quickly

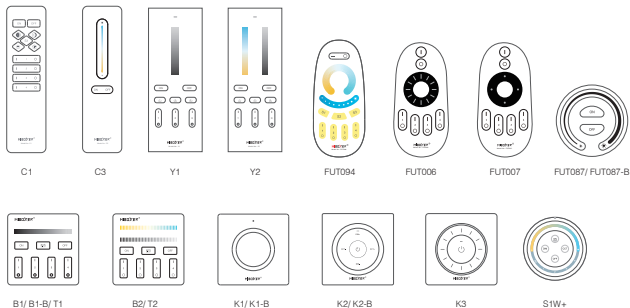
Turn Off: short press “SET” 5 times quickly, mode had shut down once indicator flash 3 times slowly

Auto transmitting (2.4G RF remote signal)

The controller can transmit remote signal to another controller automatically while the distance between lights are 30m, the remote control distance is unlimited. (Attention: all controllers must be linked with same remote)



Compatible with these 2.4G RF remote controls (Purchased separately)

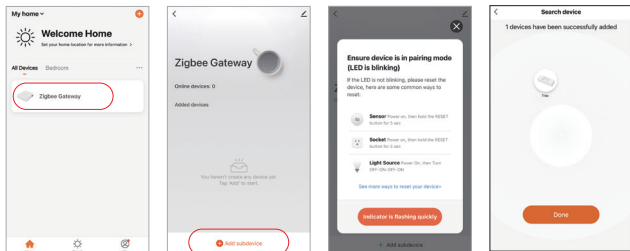


Tuya Smart APP control instruction

Added MiBoxer Zigbee 3.0 gateway into "TUYA Smart" App (please review instruction of Zigbee 3.0 gateway)

Pairing Network

- 1). Connect with power supply
- 2). Pairing network (**attention: factory default is pairing network**)
Long press "SET" about 3 seconds until indicator flashes quickly
- 3). Open "TUYA Smart" APP to click Zigbee gateway, then click "Add sub device"
- 4). Click "Indicator is flashing quickly"
- 5). Support APP dimming or group control and etc once added successfully

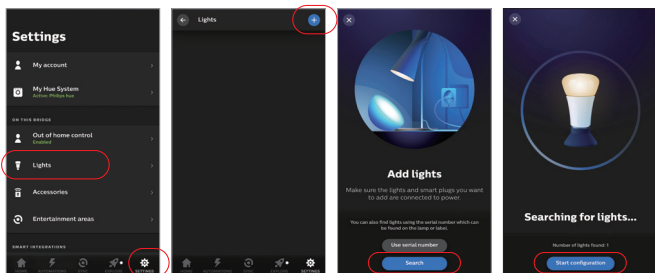


Philips Hue control instruction

Added "Philips Hue" into APP

Pairing Network

- 1). Connect with power supply
- 2). Pairing network (**attention: factory default is pairing network**)
Long press "SET" about 3 seconds until indicator flashes quickly
- 3). Open "Philips Hue" App to click "SETTINGS" and click "Lights"
- 4). Click "+" on the top of right corner
- 5). Click "Search"
- 6). Click "Start configuration", Follow the app instruction to complete configuration



Alexa voice control instruction

Alexa control (Audio support Zigbee 3.0 protocol)

You can connect directly if your Amazon ECHO already is built-in zigbee 3.0 protocol, following model with zigbee 3.0 protocol:

Amazon ECHO Plus (2nd Gen), ECHO (4th Gen), ECHO Studio, ECHO Show (2. Gen)

Pairing Network

- 1). Connect with power supply
- 2). Pairing network (**attention: factory default is pairing network**)
Long press "SET" about 3 seconds until indicator flashes quickly

Say to Amazon ECHO

"Alexa, Discover devices"

Wait for a while to discover device,

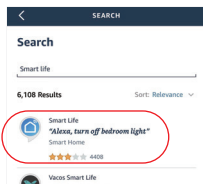
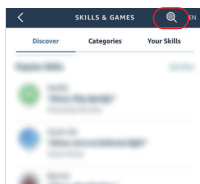
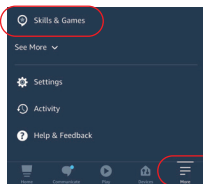
Voice control is activated

"Alexa, Discover devices"



Alexa control (Audio don't support Zigbee 3.0 protocol)

Please add device into MiBoxer Zigbee 3.0 gateway if your Alexa don't support zigbee 3.0 protocol (check details in page 10), then start following steps



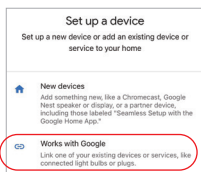
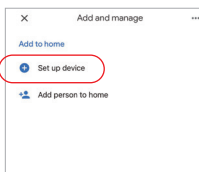
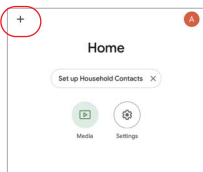
- 1). Open Alexa App
- 2). Click "More" on the bottom of right corner
- 3). Click "Skills & Games"

- 4). Click "Q" on the top of right corner
- 5). Type into "Smart life" and search

- 6). Click "Smart life" skill, follow instruction to finish configuration and start voice control

Google Home voice control instruction

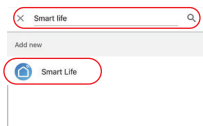
Please add device into MiBoxer Zigbee 3.0 gateway (check details in page 10) and start following steps



- 1). Open Google Home App
- 2). Click "+" on the top of left corner

- 3). Click "Set up device"

- 4). Click "Works with Google"



- 5). Click "Q" on the top of right corner
- 6). Type into "Smart life" and search
- 7). Click "Smart life" skill, follow instruction to finish configuration and start voice control

Attention

1. Please turn off power supply before installation.
2. Please ensure input voltage to be same as requirements from device.
3. Don't disassemble device if you are not expert, otherwise it will damage it.
4. Please do not use the light in the place with widely range metal area or strong electromagnetic wave nearby, otherwise, the remote distance will be seriously affected.



Made in China