

## WiFi+2.4G 16A Smart Plug (EU and FR) Model No.: SWEW

### 1. Feature

Uses WiFi + Bluetooth + 2.4G wireless transmission technology, low power consumption, strong anti-interference ability. WiFi + Bluetooth connect network can greatly enhance the connect network experience. When the router is disconnected, Bluetooth can also directly connect and control equipment at close range. After successful network configuration using [Tuya Smart] app to achieve remote control, group control, timing control, one key execution, automation, etc. functions. And it supports 2.4G remote control.

In addition, the product also has an intelligent power statistics function to monitor your power consumption in real time. Whether it is a traditional electrical appliance such as a fan, humidifier or electric fireplace, it can realize smart switch and timing control, easily manage household energy consumption, and make your life more convenient and smart!





2.4G RF Remote control distance 30m



Electricity calculating function detect home electricity easily



WiFi wireless control support long-range control



Support power-on status setting



Smartphone app control



Child Lock



Support third party voice control



Tap-to-Run & automation



Group Control



Device sharing



Timing setting countdown turn on/off



Support overcharge protection Turn off the power after the power is less than 3W for 40 minutes

## 2. Parameters

Product Name: WiFi+2.4G 16A Smart Plug (EU and FR)

Model No.: SWEW

Input Voltage: 180-240V~ 50/60Hz

Output Voltage: 180-240V~ 50/60Hz

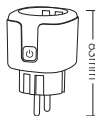
Output Current: Max 16A

WiFi Standard: IEEE 802.11b/g/n 2.4GHz

RF: 2.4GHz

2.4G RF Control Distance: 30m

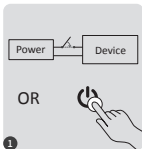
Working Temperature: -10~40°C




### 3. Remote Control

Used with C2 remote controller, it can provide timed on/off, two-way communication, vibration feedback and other functions.

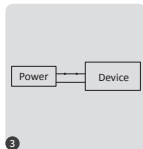
#### Linking instruction



1 Power off 10 seconds and power on again or short press "  " one time.



2 Short press " 1 " 3 times within 3 second when the light on

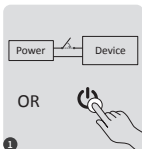



3 Light flashing 3 times slowly means it is successfully



Linking failed if light is not blinking slowly, Please follow above steps again.  
(Note: Light that have linked can't link again)

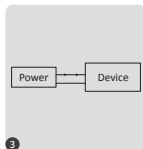
#### Unlinking instruction



1 Power off 10 seconds and power on again or short press "  " one time.



2 Short press " 1 " 5 times within 3 second when the light on



3 Light flashing 10 times slowly means it is successfully



Unlinking failed if light is not blinking quickly, Please follow above steps again.  
(Note: Light haven't linked that don't need to unlink)

## 4. Smartphone APP control

### 4.1. Download and install app

Search for **"Tuya smart"** or **"Smart life"** in the app store; you can also scan the QR code below to download and install the APP.

Please open the app click **" Register "** button to create account while using it in the first time, Log in directly if you already had account.




"Tuya smart" app

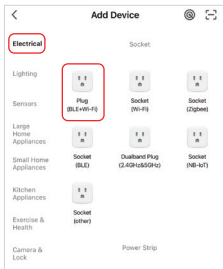
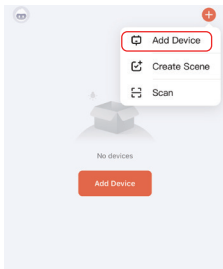
or



"Smart life" app

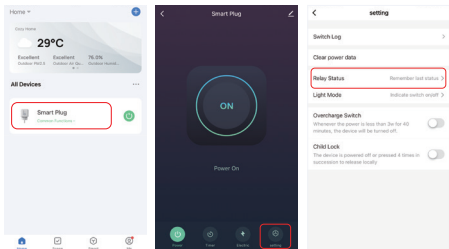
## 4.2. Pairing Network (5G router is useless)

- 1). Plug the product into an outlet and turn it on.
- 2). Confirm that the indicator light is flashing fast (2 flashes per second).  
If the indicator light is not flashing quickly, press and hold the “  ” key for 5 seconds.
- 3). Link phone with 2.4G wifi network.
- 4). Enter APP, Click “ + ” —Click “Add Device”.
- 5). Click “Electrical”, find “Plug (BLE+Wi-Fi)”.
- 6). Finish pairing.



### 4.3. Power On Status

Click single device—Click “setting”—Click “Relay Status”—select status.



### Power On Status

**OFF:** Device shutdown in any status if power source is off.

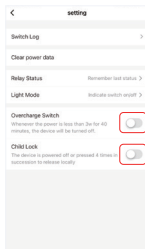
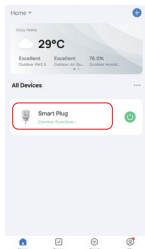
**On:** Device turn on in any status if power source is on.

**Remember last status:** Memorize the status before power off.

Eg: Device is working and power failure happened, device is on while power source recovered.

## 4.4. Overcharge protection and child lock settings


Click on the device to be set- click “setting”




### Turn on overcharge protection:

When it detects that the power is less than 3W for 40 minutes, it will automatically turn off the power to protect the charging device and prevent overcharging.

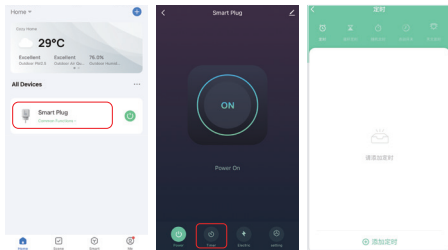
### Child lock :

After it is turned on, the “” key becomes invalid, and the APP control is not affected.


The method of locally releasing the child lock: disconnect the power supply of the device and then connect the power supply, or press “” 4 times to connect.

## 4.5. Timer Setting

Click single device or group—Click “Timer”—select timer types.



### Attention:

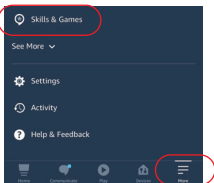
1. The timer add max quantities is 30 pcs.
2. “Countdown” “Circulate” “Random” will be stopped if there is power failure (use APP or “” to turn on or off) in current period, timer function recovered in next period.



## 5. Alexa voice control

Please add device into "Tuya Smart" app ([check details in page 3](#)) and start following steps:

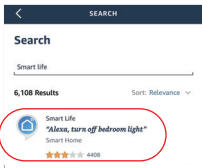
- 1). Open Alexa App
- 2). Click "More" on the bottom of right corner
- 3). Click "Skills & Games"



- 4). Click "Q" on the top of right corner
- 5). Type into "Smart life" and search



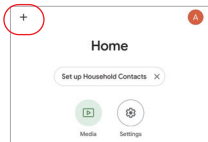
- 6). Click "Smart life" skill, follow instruction to finish configuration and start voice control



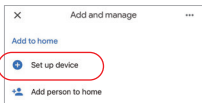
## 6. Google Home voice control

Please add device into "Tuya Smart" app ([check details in page 3](#)) and start following steps:

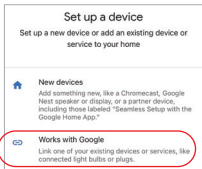
- 1). Open Google Home App
- 2). Click "+" on the top of left corner



- 3). Click "Set up device"



- 4). Click "Works with Google"



- 5). Click "Q" on the top of right corner
- 6). Type into "Smart life" and search
- 7). Click "Smart life" skill, follow instruction to finish configuration and start voice control



## 7. Attention

1. Please ensure input voltage to be same as requirements from device.
2. The smart plug needs a secure 2.4G WiFi network to work. If your router has 5G network enabled at the same time, please turn off the 5G network first, or modify the SSID to distinguish 2.4G or 5G WiFi.
3. The total power of connected appliances cannot be greater than the maximum power of the smart plug.
4. Don't disassemble device if you are not expert, otherwise it will damage it.

Made in China



Dimmer can not use in humid area