

2 GANG PUSH Wireless Dimming Panel (2.4GHz)

Model No.: PUSH3-2

Features

- CR2032 battery powered
- No wiring, easy to realize wireless dimming of PUSH switch
- Compatible with MiBoxer / Mi-Light 2.4G series lamps
- Adopt 2.4G RF wireless transmission technology, control distance 30m
- Supports 2 sets of independent control, unlimited number of lamps
- Dimming range 0.1%-100%



Product Parameters

Name: 2 GANG PUSH Wireless Dimming Panel (2.4GHz)

Model No.: PUSH3-2

Input Voltage: 3V (CR2032*1PCS)

Transmitting Power: 6dBm

RF: 2.4GHz

Control Distance: 30m

Working Temperature: -10~40°C

Standby Power Consumption: <6μA

IP Rating: IP20

EMC Standard (EMC): ETSI EN 301 489-1 V2.2.3
ETSI EN 301 489-3 V2.1.1

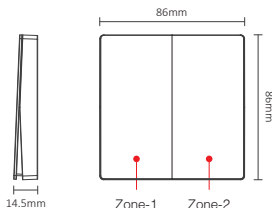
Safety Standard (LVD): EN 61347-1: 2015+A1:2018
EN 61347-2-11: 2001+A1:2019

Radio Equipment (RED): ETSI EN 300 440 V2.2.1

Certification: CE, EMC, LVD, RED

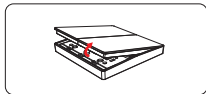
Dimming Control

- Short press to turn on/off the light, long press to adjust the light brightness.
- Supports 2 sets of independent control, unlimited number of lamps

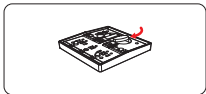


Installation

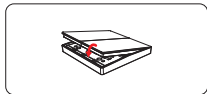
Battery Installation



1. Remove up cover

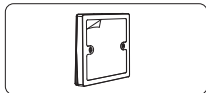


2. Install CR2032 battery
(Requires separate purchase)

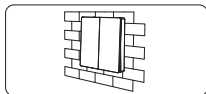


3. Close the battery cover

Sticking Installation

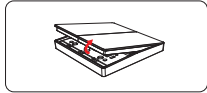


1. Tear out the back tape

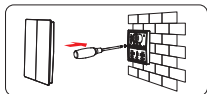


2. Stick it on the wall

Screwing Installation

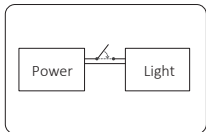


1. Remove up cover

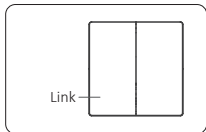


2. Screwing and cover it

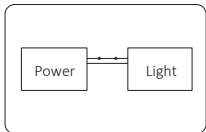
Linking Code Instructions



1. Turn off light 10 seconds
and turn on again



2. Short press "Zone" button
6 times within 3 seconds

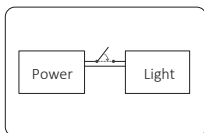


3. Link is done once light
flashes 3 times slowly

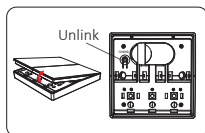


Link is failed if light doesn't flash, please repeat above steps
(Attention: can not link again if dimming panel already finished linking)

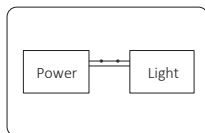
Unlinking Code Instructions



Turn off light 10 seconds and
turn on again



Short press "Unlink" button
5 times within 3 seconds



Link is done once light flashes
10 times quickly



Unlink is failed if light doesn't flash, please repeat above steps
(Attention: no need to unlink if the dimming panel never be linked)

Attention

1. Please do not use it in a humid or high temperature environment for a long time. When not in use for a long time, please remove the battery and store it in a dry, static-free environment.
2. Do not use it in an environment with a large area of metal or near strong electromagnetic waves, otherwise the control distance will be seriously affected.