

3 in 1 Panel Controller (RGB / RGBW / RGB+CCT)

1. Features

This product is Touch Panel Controller with a standard structure of 86*86 mm box, which can be connected to a constant voltage LED light strip or a lamp with a constant voltage. You can combine it with remote control and use it flexibly and comfortably.



16 Millions of colors to choose



Color temperature adjustable



Dim brightness / Saturation



2.4G RF wireless transmission technology



Remote control distance 30m



Auto-transmitting & Synchronization



Support Smartphone app control (2.4GHz gateway is needed)



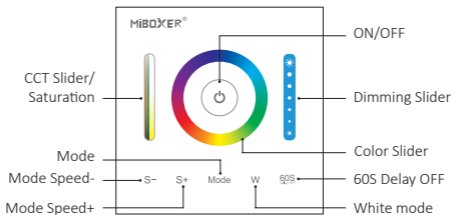
Support third party voice control (2.4GHz gateway is needed)



DMX512 controllable

(Only for RGB+CCT output mode DMX512 LED transmitter is needed)

2. Function of keys



This controller is compatible with RGB, RGBW and RGB+CCT version. It will be RGB+CCT version when you get it first time.

Method of Switching RGB, RGBW and RGB+CCT version

1. When the light is OFF, long press “ Mode ” and “ W ” button at the same time, the controller will sound 3 times after 5 seconds, then it change to RGB version.
2. When the light is OFF, long press “ W ” and “ 60S_{Duty OFF} ” button at the same time, the controller will sound 4 times after 5 seconds, then it change to RGBW version.
3. When the light is OFF, long press “ Mode ” and “ 60S_{Duty OFF} ” button at the sametime, the controller will sound 5 times after 5 seconds, then it change to RGB+CCT version.



1. Short press ON / OFF switching
2. Long press to turn on night light while light is on.
3. Short press twice to enter the learning code state (see 5 for details) while light is on.

W Press " W ", switch to static white light mode.



When the light is ON, press "60S Delay OFF", the light will be OFF Automatically after 60 seconds.



Touch color ring, choose the color you want.



Touch dimming slider to change the brightness from 1~100%.



Each modes have their own brightness value and saturation value (Static white light mode and dynamic white light gradual changing mode have no saturation) function see details for P3 Mode table.

Mode

1. Press " Mode " shortly, switch to next mode; long press " Mode ", switch the modes circularly, there are 12 kind modes. (PS, on the color light, press mode, it will get to first mode).
2. In the version of RGB+CCT, white gradual changing mode means CCT gradual changing under static white mode.

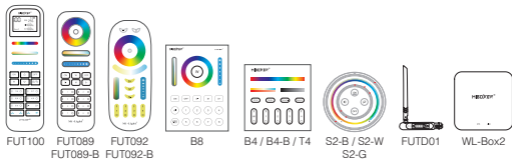
S-

1. Slow the speed on present dynamic mode. There is 5 class speed. Long press " S- ", slow the speed continuously. When it get to slowest speed, " S- " will be invalid. (Dynamic mode see details for P3 Mode table.)
2. When light is OFF, long press 5 seconds to turn OFF the indicating sound.

S+

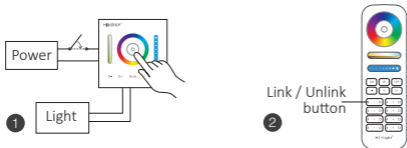
1. Accelerate the speed on present dynamic mode. There is 5 class speed. Long press " S+ ", accelerate the speed continuously. When it get to fastest speed, " S+ " will be invalid. (Dynamic mode see details for P3 Mode table.)
2. When light is OFF, long press 5 seconds to turn ON the indicating sound.

Compatible with these remote controls (Purchased separately)



3. Remote control Link/Unlink

Support all remote control to do Link/Unlink (see 3 for details)



Link

Press "⏻" 2 times continuously when light is on

Press the remote control within 3 seconds "I" key 3 times

The light blink 3 times slowly means the linking is done successfully

Unlink

Press "⏻" 2 times continuously when light is on

Press the remote control within 3 seconds "I" key 5 times

The light blinking 10 times quickly means the unlinking successfully

 If the link or unlink failed, please follow the above steps again.

4. Dynamic mode table selection (Remote control only)

Select dynamic mode table 1: press "⏻" 2 times continuously when light is on, Within 3 seconds, press the "S+" button of the remote control 5 times, the blue light blink 3 times slowly , indicating successfully.

Select dynamic mode table 2: press "⏻" 2 times continuously when light is on, Within 3 seconds, press the "S-" button of the remote control 5 times, the yellow light blink 3 times slowly, indicating successfully.

Mode table 1 (default)

State	Number	Mode	Brightness/Saturation /Speed
Static Mode (Not applicable to remote control)	1	Red	Adjustable (Speed is not adjustable)
	2	Green	
	3	Blue	
Dynamic Mode	4	Mardi Gras	Adjustable
	5	Automatic color change	
	6	Sam	
	7	Gemstone	
	8	Twilight	
	9	American	
	10	Fat Tuesday	
	11	Party	
	12	Slow Color Splash	

Dynamic mode table 2 (need to switch manually)


State	Number	Mode	Brightness/Saturation /Speed
Static Mode (Not applicable to remote control)	1	Red	Adjustable (Speed is not adjustable)
	2	Green	
	3	Blue	
Dynamic Mode	4	Colors gradual change	Adjustable saturation
	5	White light Gradual change	Saturation is not adjustable
	6	RGB gradual change	Adjustable
	7	Seven colors jump to change	
	8	Jump to change randomly	
	9	Red light gradual change +Flash 3 times	
	10	Green light gradual change +Flash 3 times	
	11	Blue light gradual change +Flash 3 times	
	12	White light gradual change +Flash 3 times	

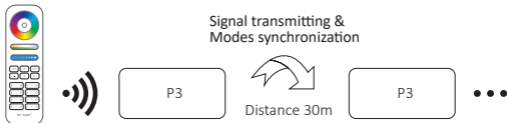
5. Signal transmitting

One controller can transmit the signals from the remote control to another controller within 30m, as long as there is a controller within 30m, the remote control distance can be limitless.

6. Modes synchronization

Different controllers can work synchronously when they are started at different times, controller by the same remote, under same dynamic mode and within 30m distance.

 The same dynamic mode, the same speed can be synchronized.



7. PWM high frequency / low frequency switching

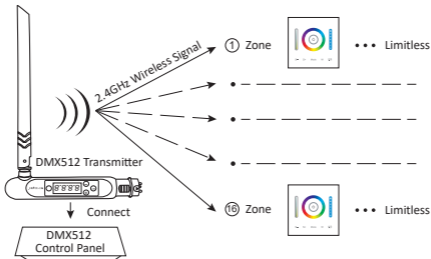
Switch to high frequency (8KHz): on the condition of turning on the light

1. Short press the "OFF" button of the remote control once;
2. Short press the "ON" button 5 times within 3 seconds, the white light blink 2 times quickly, indicating successfully.

Switch to low frequency (500Hz): on the condition of turning off the light

1. Short press the "ON" button of the remote control once;
2. Short press the "OFF" button 5 times within 3 seconds, the white light blink 2 times slowly, indicating successfully.

8. DMX512 LED Transmitter Control (Purchased separately)



DMX512 LED Transmitter Link/Unlink

Compatible with DMX512 LED Transmitter (Purchase separately)

- 1 Choose the zone for the light by pressing "+" or "-" (e.g. "CH12" means zone 12)



Link

Press "⊖" 2 times continuously when light is on

Short press "SET" 3 times within 3 seconds

The light blink 3 times slowly means the linking is done successfully

Unlink

Press "⊖" 2 times continuously when light is on

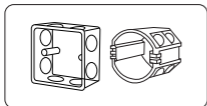
Short press "SET" 5 times within 3 seconds

The light blinking 10 times quickly means the unlinking successfully

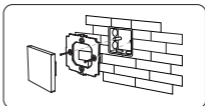


If the link or unlink failed, please follow the above steps again.

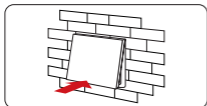
9. Installation



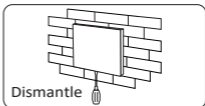
Install the bottom case into the wall;
Above are the standard bottom cases.



Fix the controller base on the bottom
case with screw.



Clicks into the upper side of glass panel
on the controller base, then press the
lower side slightly to make it clicks into
the controller base.



Plug into the below bayonet with a
screwdriver, and upwarp screwdriver,
then you can dismantle the controller.

10. Attention

1. Please check whether the voltage of the power supply is in accordance with the controller, and please check the connection of both the cathode and anode, otherwise the controller will be broken.
2. Please don't connect wires with power on. Please turn on again only when it is in right connection and no short circuit.
3. Please do not use the controller in the place with widely range metal area or strong electromagnetic wave nearby, otherwise, the remote distance will be seriously affected .

Made in China

