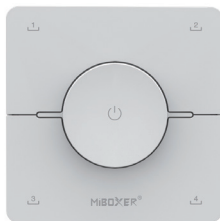


## Rotating scene remote pane

Model No.: K0

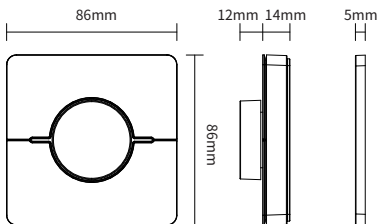
### Product Feature

- Brightness and color temperature adjustable
- 2.4GHz wireless transmission technology
- Support MiBoxer/Mi-Light 2.4G series
- Control distance: 30m
- Supports saving scene presets (up to 4 presets can be saved)
- Supports matching multiple devices and can control multiple devices at the same time
- Easy installation, magnetic mounting

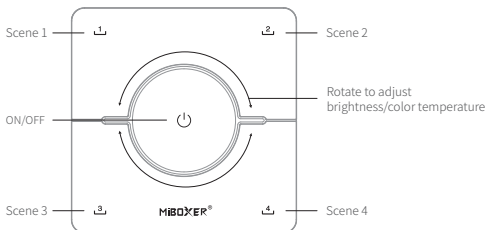


### Product Parameter

Product name :	Rotating scene remote pane	Working Temperature :	-10~40 C
Model:	K0	EMC Standards (EMC) :	ETSI EN301 489-1 v 2.2.3 (2019-11) ETSI EN 301 489-3 v 2.3.2 (2023-01)
Operating Voltage:	3V(AAA*2PCS)	Safety Standard (LVD) :	EN 61347-2-11:2001+A1:2019, EN 61347-1:2015+A1:2021, EN 62493:2015 +A1:2022
Standby power:	6μA	Radio equipment (RED) :	ETSI EN 300 440 V2.2.1
Transmit power :	6dBm	Certification	CE, EMC, LVD, RED
RF:	2.4GHz RF		
Modulation Method :	GFSK		
Control Distance :	30M		



## Indication



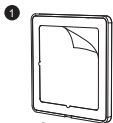
**Short press:** Turn on/off light. **Rotating:** Dim brightness  
**Long press while the light is on:** until indicator is blinking, switch to cct dimmable, rotate it to dim color temperature.  
(Attention: the device will log out cct mode if user don't operate it within 3 seconds)

**Long press while the light is off:** enter into night light mode.

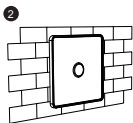


**Short press:** Activate scene  
**Long press 3 seconds:** Save the current lighting state  
( the light flashes one time slowly once completed successfully).

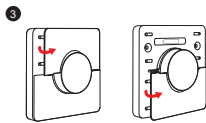
## Installation



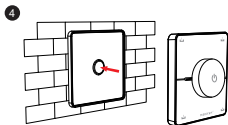
Rip the double-sided tape on the back of the base



Attach the base securely



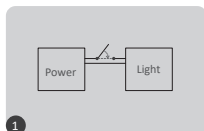
Install the battery :2\*AAA



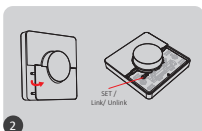
The remote is magnetized on the base

## Link/Unlink

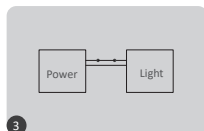
**Link** controller must link with remote before using it



turn off light 10 seconds and turn on again



Open the lower cover and press the "SET" key 3 times

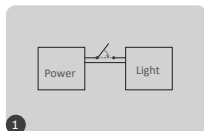


link is done once light flashes 3 times slowly

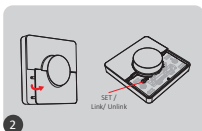


Link is failed if light doesn't flash, please repeat above steps  
(Attention: can not link again if remote already finished linking)

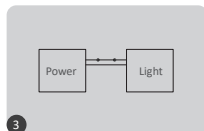
**Unlink:**



turn off light 10 seconds and turn on again



Open the lower cover and press the "SET" key 5 times



link is done once light flashes 10 times quickly



Unlink is failed if light doesn't flash, please repeat above steps  
(Attention: no need to unlink if the light never be linked)

## Attention

- 1.This remote control supports MiBoxer/Mi-Light 2.4G series products; see the product manual for details about whether this remote control is compatible.
2. Don't use it in humidity or high temperature area, please take out battery if don't use it frequently and keep it in dry or static electricity area
3. Don't use it near metal or strong magnetic area, it will affect signal and lost distance.



Made in China