



**Mi • Light**  
Subordinate New Brand

## Wardrobe / Cabinet Light Dimmer (2.4GHz)

Model No.: CL1R

### Features

- 0.1%-100% stepless dimming.
- Supports power-off memory.
- 2.4G RF remote control distance 30m.
- Suitable for wardrobe/cabinet lights.



### Parameters and certification

Name: Wardrobe / Cabinet Light Dimmer

Model No.: CL1R

Input voltage: DC12-24V

Output: PWM Signal

RF: 2.4GHz

Control Distance: 30M

Working temperature: -10~40°C

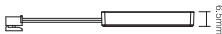
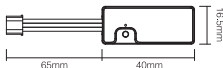
IP Rate: IP20

EMC standard: ETSI EN 301 489-1 V2.2.3  
ETSI EN 301 489-3 V2.3.2

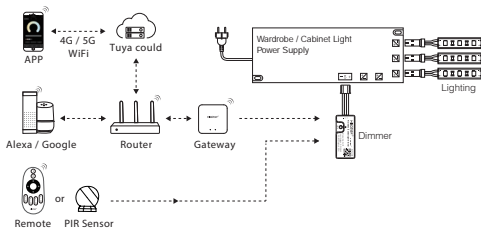
Security standard: EN 61347-2-11: 2001+A1: 2019  
EN 61347-1: 2015+A1:2021  
EN 62493:2015+A1:2022

Radio equipment: ETSI EN 300 400 V2.2.1

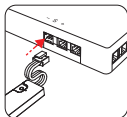
Certification: CE、EMC、LVD、RED



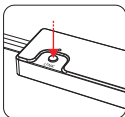
# Application Diagram



## Link instructions



Connect the cabinet light power



Press "LINK" button once

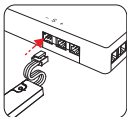


Press "I" button 3 times within 3 seconds  
Indicator blink 3 times slowly means linking is successfully.

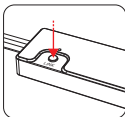


Link is failed if light doesn't flash, please repeat above steps  
(Attention: can not link again if remote already finished linking)

## Unlink instructions



Connect the cabinet  
light power



Press "LINK" button  
once



Press "I" button 5 times  
within 3 seconds  
Indicator blink 10 times  
quickly means unlink is  
successfully.



Unlink is failed if light doesn't flash, please repeat above steps  
(Attention: no need to unlink if the remote never be linked)