



## **DALI 25W RGB+CCT LED Downlight (DT8)**

Model No.: DW5-25A-DL

## Features



16 Millions  
of colors to choose



Color temperature  
2700K~6500K



Dimmable  
Saturation control



Support DALI standard protocol IEC62386  
Support DT8 type

## Parameters

Model No.: DW5-25A-DL

Input Signal: DALI Signal

DALI Bus Standard: IEC62386

Input Voltage: 100-240V~ 50/60Hz

Working Temperature: -10~40°C

Power: 25W

CRI: >80

PF: >0.5

Color Temperature: 2700K~6500K

Luminous Flux: 2000LM

Light Efficiency: 80LM/W

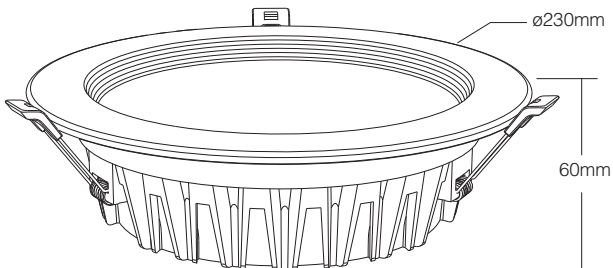
Dimming range: 0~100%

Beam Angle: 120°

Lifespan: 50000 hours

Product Weight: 860g

Material: Aluminum

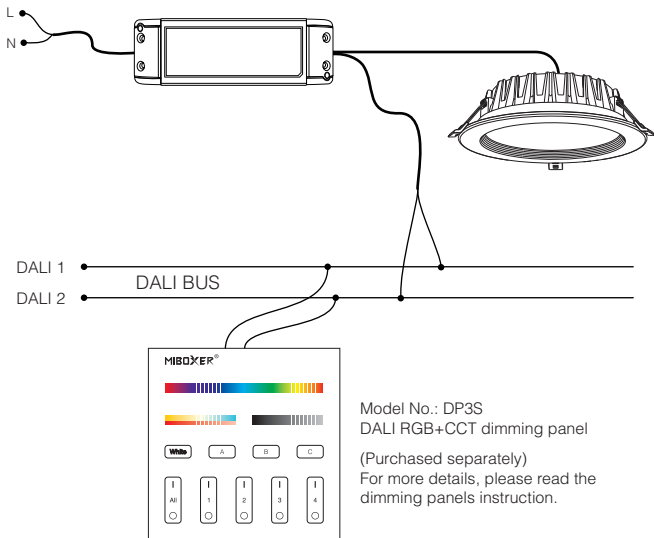


Hole Size:  $\varnothing$ 200-210mm

# Connection Diagram

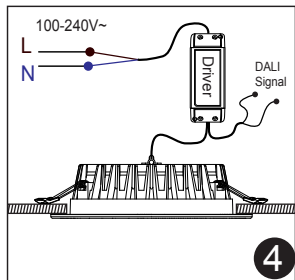
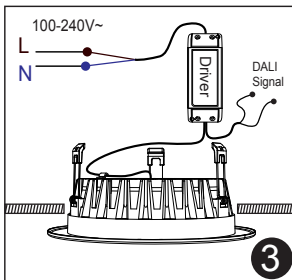
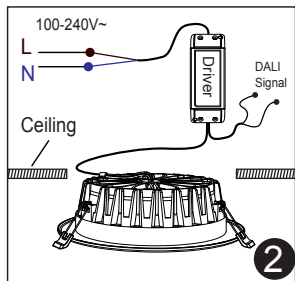
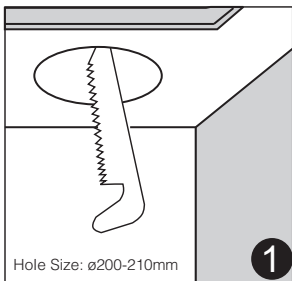
Note: Need DALI master to set up address

Input: AC100~240V 50/60Hz



# Installation

1. Please open the hole on the ceiling according to the correct size of Diagram 1.
2. Connect the driver properly according to the wire connection Diagram 2. **( Please ensure the power is not connected when you install the downlight ).**
3. put the driver and wire into the ceiling from the hole.
4. Push in the three spring elements, make sure that they are deployed and anchored on the back of the ceiling.



# Caution

- 1). To reduce the risk of electric shock, please ensure the power is not connected when you install the downlight.
- 2). Notice! Amateurs do not disassemble or install the lamps. If the light is damaged, please seek professional electrical assistance, or please discard the light .
- 3). Lamp installation must be correct and strict, solid and reliable, avoid long time using in violent vibration place.



Made in China